



# Roosevelt Island Garden Club

3/19/23 Spring Meeting



# Secretary

- Quorum Verification
- Roll Call of Officers
- Approval of Minutes from October 23rd, 2022  
General Membership Fall meeting

# Agenda

- Welcome to the Spring Meeting
- Roll Call of Officers - Secretary
- Approval of Minutes from Fall General Membership Meeting
- President's Report – Plans for 2023
- VP's Report – Community Service, Waitlist, New members
- Secretary's Report
- Treasurer's Report
- Directors' Reports
- Committee Reports – Ad hoc, Standard, Outreach, Compost, Landscape, Rose Garden
- New Business
- Closing of Meeting



# President's Report





# 2023 – Happy Anniversary to our Garden Club!

## Gardening for 30 years in our current location and we are a 48 year old club

### Location:

1. Next to the Library
2. Across from Post Office
3. Behind the Subway
4. Current Octagon

### Duration:

1. 1 year
2. 7 years
3. 10 years
4. 30 years & still going!

### Years:

1. 1975
2. 1976-1983
3. 1983-1993
4. 1993-now



# 10<sup>th</sup> Anniversary from 2013



Its been 10 years since Ron Schuppert's was our President and he helped guide us through a turbulent period

Since then the club has instated a more detailed organizational structure with enhanced rules, regulations, and bylaws, with 3 directors added to the board for more stability

**Ron, Thank you for your service and your continuing support to the Club**

# 2023 Board

## Elected Positions



**President**  
Neal Weissman



**Vice President**  
Jack Burkhalter



**Secretary**  
Julia Ferguson



**Treasurer**  
Takelu Gross



**Director**  
Dave Nisthaus

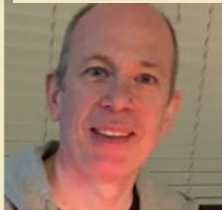


**Director**  
Carolina Trujillo



**Director**  
Kristin Carotenuto

## Appointed Positions



**Landscape &  
Common Areas**  
Curtis Lowrey



**Maintenance**  
Antoine Réveillon

Effective  
April 1st



**Standards**  
Janet Linville



**Compost**



**Outreach & Publicity**



**Rose Garden**  
Roisin O'Cearhaill



# We welcome 2 new member to the board



Effective  
April 1st

**Maintenance**

Antoine Réveillon



**Rose Garden**

Roisin O'Cearhaill

# Robert Ostergaard – C48

- 2020 Secretary
- Helped improved our technology and was a calm, delightful, generous person to be associated with
- Good-bye Robert
- We wish you the best in the next chapter of your life in Asbury Park, NJ



# Ray & Gloria Cangemie – C60

- *“We joined in 2012 and after great deliberation we have elected to go Legacy so others can have the same great pleasure as we did of growing veggies & flowers*
- *We look forward to visiting the garden which is an oasis and enjoying Garden social events”*
- Ray & Gloria are one of our wonderful original off island members who were grandfathered in before RIOC changed the rules to only allow Roosevelt Islanders to join
- Ray & Gloria always brought with them a charm and style that was very comfortable to be around
- We look forward to seeing them visit





# Nicolas Choueiri – B20

- Nicolas, a member for over 20 years, nephew of Ali, has decided to go Legacy since he travels overseas and has a place upstate, so he does not have the time to devote to his garden plot
- He knows he will make the next family on the waitlist happy to get a plot



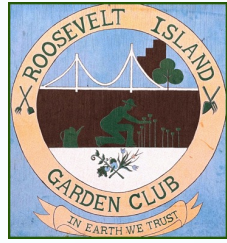
# RIGC – RIOC 2023

- Our annual contract has been renewed



# TRASH GUIDELINES:

Please carry out what you carry in.



**All recyclables should go home to our building recycling systems.  
We are all volunteers working together and we must pay RIOC  
for the trash pick up below.**

March through November

**---WEEKLY: Our TWO GRAY BINS go on Sunday evening for RIOC  
pickup on Monday morning. These are reserved for rose cane cuttings,  
diseased plants, invasive weeds, a small amount of miscellany. No  
pesticides or herbicides are allowed in trash  
Help out by rolling bins to the curb.**

**---Alternating WEEKs: We can only put out 1 Cu Yard for Bulk  
Pickup by RIOC. This is reserved for used boards (under 5'), wire  
tomato cages, broken bricks and pavers, large plant roots.**

**Please contact the Board if you have any Bulk items.  
(If in doubt, give a shout!)**



# Things we hope to do in 2023

- Update the front common area
- Add a new sign at our entrance
- Add a new bench to the South East Landscape bed by section D
- Install the Rose Garden irrigation system
- Fight Spotted Lanternflies
- Replace old wooden borders
- The Great Shopping Expedition
- Tree walk with Schuyler Borden
- Student visits & classes



# Members & Associates

- 132 plots in the garden
- 388 people (306 adults & 82 children)

# VP Report



Gray-head coneflower (*Ratibida pinnata*)



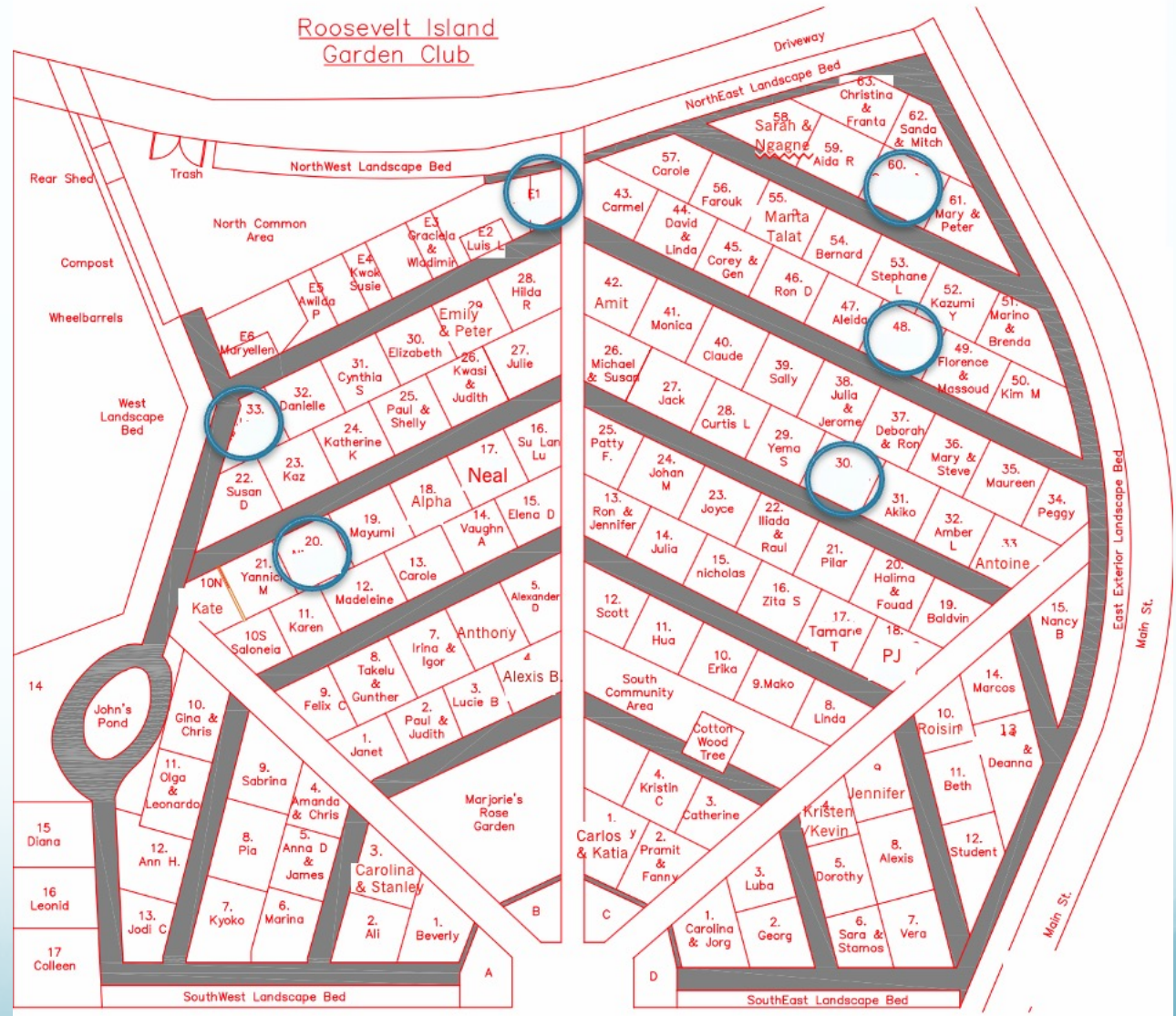
# VP Report - Waitlist

Currently on the waitlist: **166 people**



# Plots to be assigned

- B 20
- B 33
- C 30
- C 48
- C 60
- E 01







# Community Service Days

- Members are expected to contribute **at least 3 hours** of community service each year
- Reporting service: Will ask you to keep records and report
- **Come join us on Community Service Days 10 AM to 2 PM**

**April 30, Sunday**

**June 17, Saturday**

**Sept. 9, Saturday**

**Nov. 11, Saturday**



# Community Service Reporting

**YES NO: I contributed 3 or more hours of community service (time spent on RIGC activities not related to your own plot).**

**Please list approximate dates and activities. If you did not contribute to community service, please explain why.**

**Activities and dates:**





# Self-Directed Community Service

- Alternative/in addition to Community Service Days
- Members can work at their own pace, on their own, and get credit for the hours they put in
- Does not include work in your own plot or paths
- Located in shed, on wall by the tool rack
- Take a photo for your records

[illegible]



# Member in Good Standing

- Only **Members in good standing (MIGS)** can vote and run for office. See Article III in Bylaws.  
*A member in good standing is defined as someone who--*
  - maintains their plot, registers on time
  - does not have outstanding unresolved Letters of Violation
  - has met the requirements of community service as outlined in the Rules and Regulations, and ( $\geq 3$  hours/year)
  - has met the requirements of General Membership meeting attendance as stated in these Bylaws (at least one of two semi-annual meetings)
- Each garden plot entitles a household who leases it to one vote, regardless of the number of people in the household.
- **New members** must wait a **year** before holding elected office unless, as Associates, they had six months of prior active community service or committee work, in which case at six months of membership they qualify. Article V.A.



- In 2021, Leadership & Engagement Task Force recommended Town Halls
- Purpose—
  - For members to generate ideas, share problems, and collaborate on projects
  - Creates opportunity for members to present ideas, teach and learn skills, build community and collaboration
  - Update membership on plans and activities of the RIGC and Board
  - Facilitated by either a Member or Board Member
- **Sharing wisdom, garden seeds, plants: May 20** (Saturday) 5pm: Rain date May 21
- **October 8 (Sunday): Harvest Potluck:** Rain date October 15



# Nature Walk

with Schuyler Borden

RIGC Associate

An ISA certified Arborist with a Masters Degree of  
Forestry from Yale School of the Environment

**Learn about Trees**

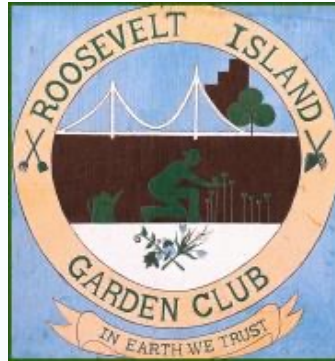
**Sunday, May 20<sup>th</sup> 4:00pm -5:00pm**

**Meet under the Cottonwood Tree**





# 2023 Secretary's Report



- Land Acknowledgement
- Beautiful shared patchwork quilt
- All neighbors/All volunteers
- Mission statement
- Smooth 2023 Registration
- Thank you



# Treasurer's Report

---



# Summary

---

Almost all payments made by end of Feb. '23 with a few reminders

Thank you for your donations!

## Notes:

- The Locker fee is \$25.- (discounted)
- The membership fee remained the same for 2023

## Donations:

- Our donations are less than last year
- Donations don't have a deadline.



# Independent Financial Review

- On 1/6/23 we shared with Jean Lee our Garden Club's financial records for 2022 in detail
- Jean Lee was a former Treasurer from our club's early days, and currently as a Legacy Associate she helps her sister Karen Lee in her plot B11; last year, she also pitched in to help us rebuild the Rose Garden
- Jean Lee has stated, “the Garden Club's financial accounts are in order, the record keeping is well managed, and accurately reflects the bank's monthly statements.” Jean is also impressed by the progress our club has made since its early days



# Directors' Reports

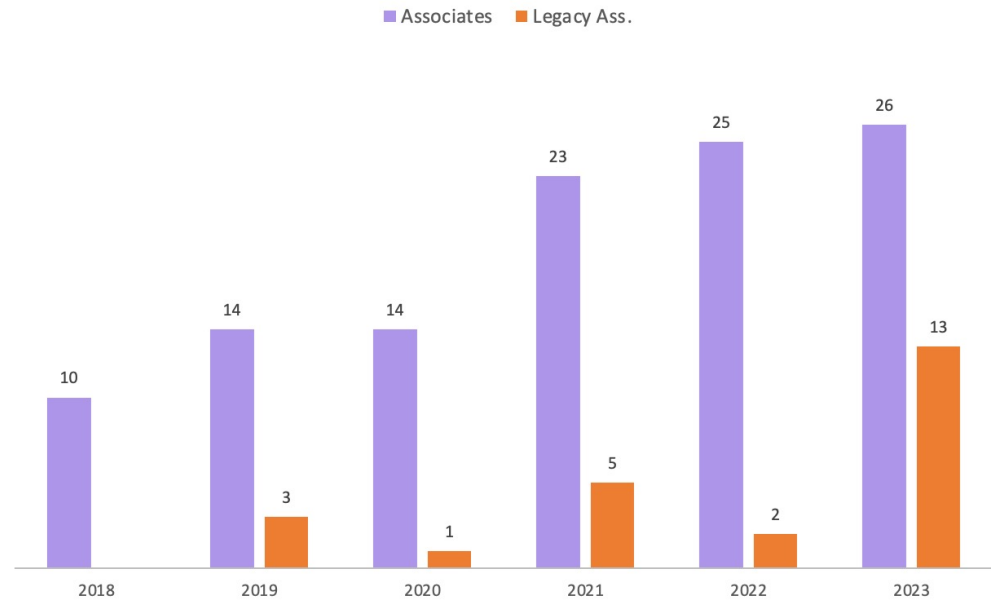


**Carolina  
Dave  
Kristin**



# The Associate Program

Associate Members Program







# Clarifications on being an Associate

---

To be an Associate you must be on the waitlist for a plot but...

- You do not need to be an Associate to be on the waitlist
- Being an Associate does not speed up the wait for a plot
- The waitlist is based solely in the date of application
- You can pause being an associate without affecting your position in the waitlist but if you take a break, please be kind and return the garden key
- Only active RIGC members should have access to the garden when gates are closed to the public

# The Great Shopping Expedition

On Saturday morning, at 9:00 am **April 29<sup>rd</sup>**, near the front of the gardens, members with vehicles can volunteer to support members who wish to be passengers to get their gardening supplies.

Drivers qualify for 2 hrs of community service  
(ex: Verni Gardening Center, or Home Depot)

If you wish to volunteer as a driver or participate as a passenger, please contact Julia Ferguson at [rigardencub@gmail.com](mailto:rigardencub@gmail.com) by April 8<sup>th</sup>, or sign up in person today to get on our first come list. Passengers limited to: 1 member/household



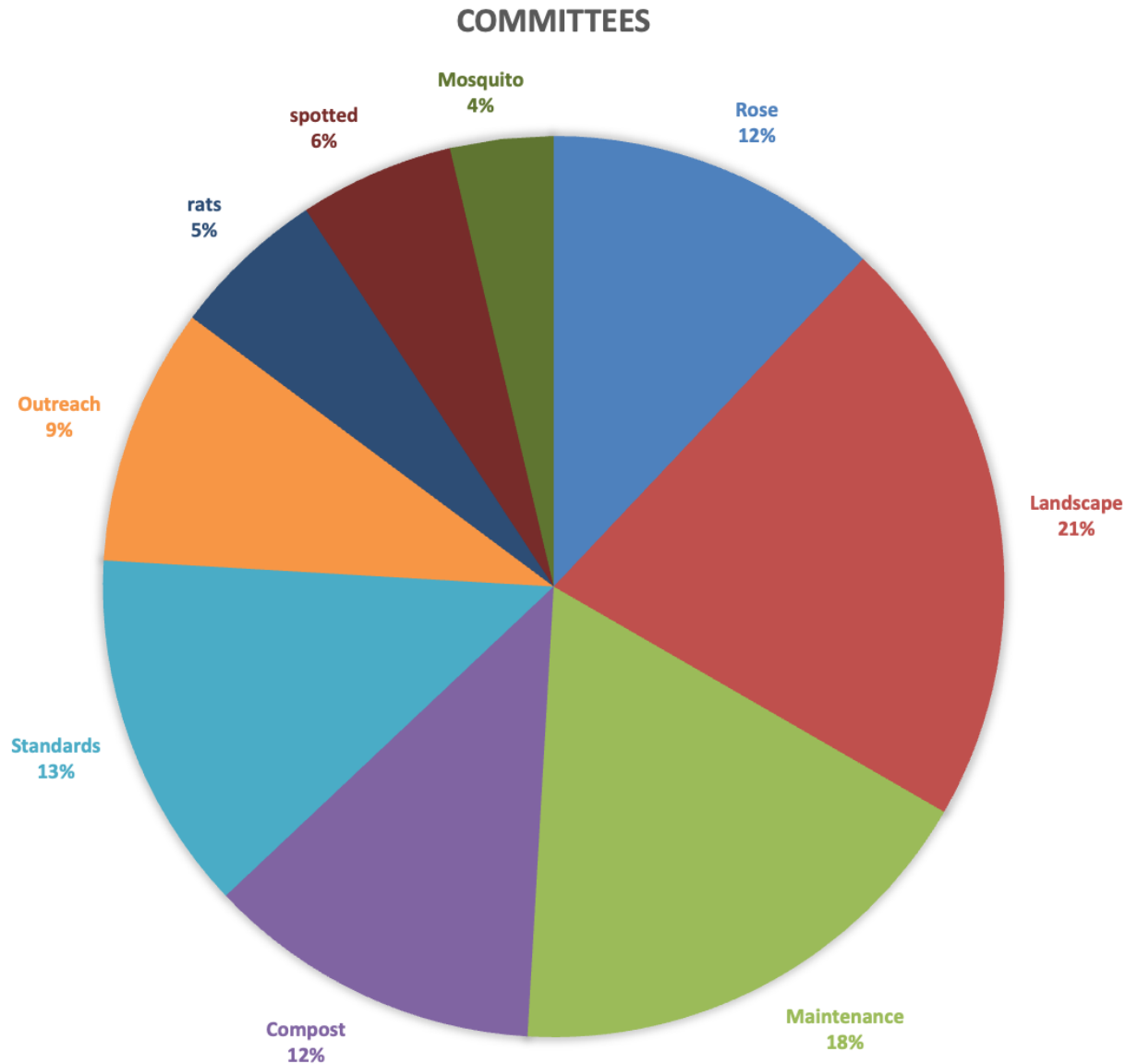


# Rivercross Window Display

- May – June The RIGC will be on Display on Main Street!
- Looking for Artistic/Photographer members who would like to help out
- We have 20 ft of space in which to share garden features, events and history
- Come join this Fun Ad-hoc Window Display project scheduled for March-April



# Committee Chair Reports



# Changes in Rules & Regulations

## *Plot Standards*

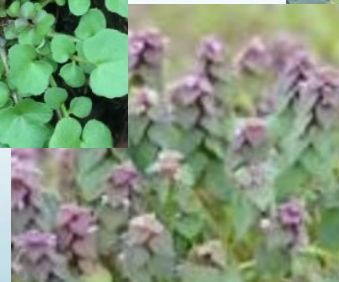
- Plots must be actively used, maintained, and planted throughout the growing season (May - September) as indicated by at least two of the following:
  - a. New plantings or seasonal maintenance and management of growth or harvesting.
  - b. Soil enhancement or tilling begun by May 1st since the last frost date is April 15th.
  - c. Organic debris removal during the season, other than an intentional compost or small branch pile
- Plants along the edges of a garden must not extend more than 8 inches into the path
- Plants with thorns may not extend at all beyond plot border
- Keep vines and bushes within your own plot space



# Changes in Rules & Regulations

## *Common Weeds*

- Weed your garden regularly and never let weeds, including edible weeds, (e.g., lambs' quarter, dandelions, and purslane) go to seed or encroach on neighbors' gardens
- Weedy plants often encountered in the RIGC include the following. Please remove them.
  - Bindweed
  - Goutweed
  - Nutsedge
  - Quack grass
  - Chickweed
  - Hairy bittercress
  - Purple deadnettle



# Changes in Rules & Regulations

## *NY State Invasive Plants*

- Invasive plants are species that are non-native to a particular ecosystem, and whose introduction causes or is likely to cause economic or environmental harm or harm to human health.
- The NYS Department of Environmental Conservation (DEC) list of Invasive Terrestrial Plants (39 plants as of January 2023) includes the following six seen in the RIGC:
  - Japanese knotweed
  - Lesser celandine
  - Purple loosestrife
  - Japanese virgin's bower clematis
  - Porcelain berry vine
  - Mugwort
- RIGC stands with NY State's protection of the environment and requires the removal of the above listed plants.







# Changes in Rules & Regulations *Trees*

- New trees are permitted only if approved by the Board, and they must be containerized and kept under a height of 8 feet (2.4 meters)
- All trees and bushes must fit the landscape, be pruned regularly, and not cause hardship or shade to neighbors.
- Figs, Rose of Sharon, and Lilacs must be kept at a maximum 8 feet (2.4 meters)
- A very few existing trees as of 11/07/13 are grandfathered. All grandfathered trees must be kept at a maximum height of 10 feet (3 meters)
- New plantings of fast-growing trees--White Mulberry, Curly Willow, and Tree of Heaven--are not allowed
- Bamboo cannot be planted outside the current existing area of John's Pond



# Standards Committee

## *Changes in Evaluating Adherence to Standards*

- With Board input, the grading system has been eliminated because it is not a good fit for assessing adherence to standards:
  - No more C's, D's or "3 C's = D"
  - Replaced with **YES** or **NO** regarding adherence to each standard
- **STEP 1:** If standard(s) not met, Member receives a **Standards Warning Notice** email or letter with specific standards issue(s) listed
- **STEP 2:** Recipient must respond to email/letter to indicate their plans to resolve the standards issue(s)\*
- **STEP 3:** If standard(s) are met by the next inspection, issue is resolved
- **STEP 4:** If standard issue not resolved by next inspection, then a **Letter of Violation (LOV)** will be issued

\*There may be certain circumstances in which the standard issue cannot be resolved by next inspection, e.g., tree pruning; in which case, more time is allowed for resolution.

# Standards Committee

## *2023 Inspection Schedule*

- Dates of inspection at 10 am:
  - May 20th
  - June 25th
  - August 5th
  - September 10th
  - October 7th



# Additional R&R changes

## Outside of the standards committee

- **Trash removal has been updated: We no longer go to AVAC**
- **No vaping has been included along with no smoking**
- **Appeal of Termination reflects the new jury system for quicker turn around so plots do not sit unattended**
- **Locker guidelines have been added**
- **Woodchips should only be dye free**





# Spotted Lanternflies

- Now is the time for the (non-Easter) spotted Lanternfly Hunt
- Attack with an old credit card: scrap'em, crush'em, bag'em



- In May–June, as the small ones hatch vacuum them up
- The vacuum is in the shed



# Maintenance



We thank Kwasi for all the work he did last year on so many borders, and being part of the Board. He is taking some time off this year, however we can still count on him.







# RIGC Outreach & Publicity

Website, Instagram, News, Signage, Volunteers, Visits, Education, Community



**Photos, Blog articles, Signage:**

**Visits:** PS 217 Students, Girl Scouts, RI Youth Program Coler Connections

Youth classes Spring, Summer, Fall

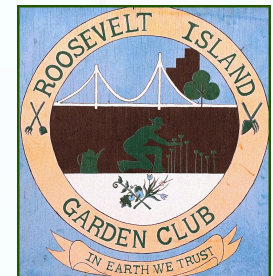
**Connections:**

iDig2Learn, Coler, RIHS, Cornell Tech, RI Day Nursery

**Volunteering:**

Cornell Tech students, individuals, adults,

**Events:** **Rosarian visit**, Potlucks, Habitat Planting, Lectures, Garden Learning Day, Art in the Gardens, Earth Day, Roosevelt Island Day, Fall for Arts Pumpkin Smash w/ NYC Compost  
[Ikebana](#), [RIGC Recipes Idea](#)







# RIGC'S Community Compost System

*"In Earth We Trust"*

What comes from the earth returns to the earth. We compost at least 30,000 pounds of organic materials each year due to amazing member volunteers!

- **Bring GREEN & BROWN ORGANIC PLANT MATERIALS to this chicken wire bin only.**

- All rose canes, invasive plants (bindweed, knotweed, celandine), and diseased plants must be trashed in gray trash bins.
- Branches larger than your finger that cannot be broken easily belong in the Branch Pile near the bamboo thicket.



- **Food scraps can go in these tumblers only.**

- **A core Compost Team works on the big piles** (Anthony, Kaz, Jorg)



- Watch for the **SIFT ME** sign for sifting availability
- **Come out on a CS days and weekends for a Compost guide** and system learning





## Landscaped Front Areas

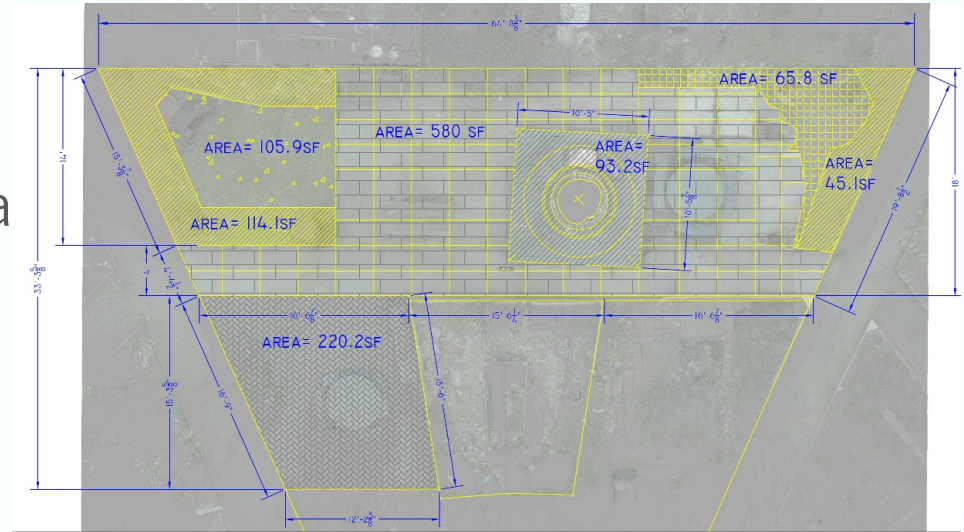
- These will be the next areas to focus on as the platform/borders/pavers need to be replaced.
- We have received a CCNYC grant of \$3,000 to upgrade our front external welcome and internal common area.
- Stay tuned...





# Front Common Area

- Our pavers had become a tripping hazard so they needed to be addressed
- We thank Kalin for his mechanical drawing
- We thank Kwasi & Farouk for doing the heavy lifting
- Please bear with us while we enhance the grounds
- If you need to enter the area please do so carefully





# The Rose Garden is looking good

**We thank Beverly & Kaz last year on Zoom**



**Now that we are back together, lets thank them again but in person !!**

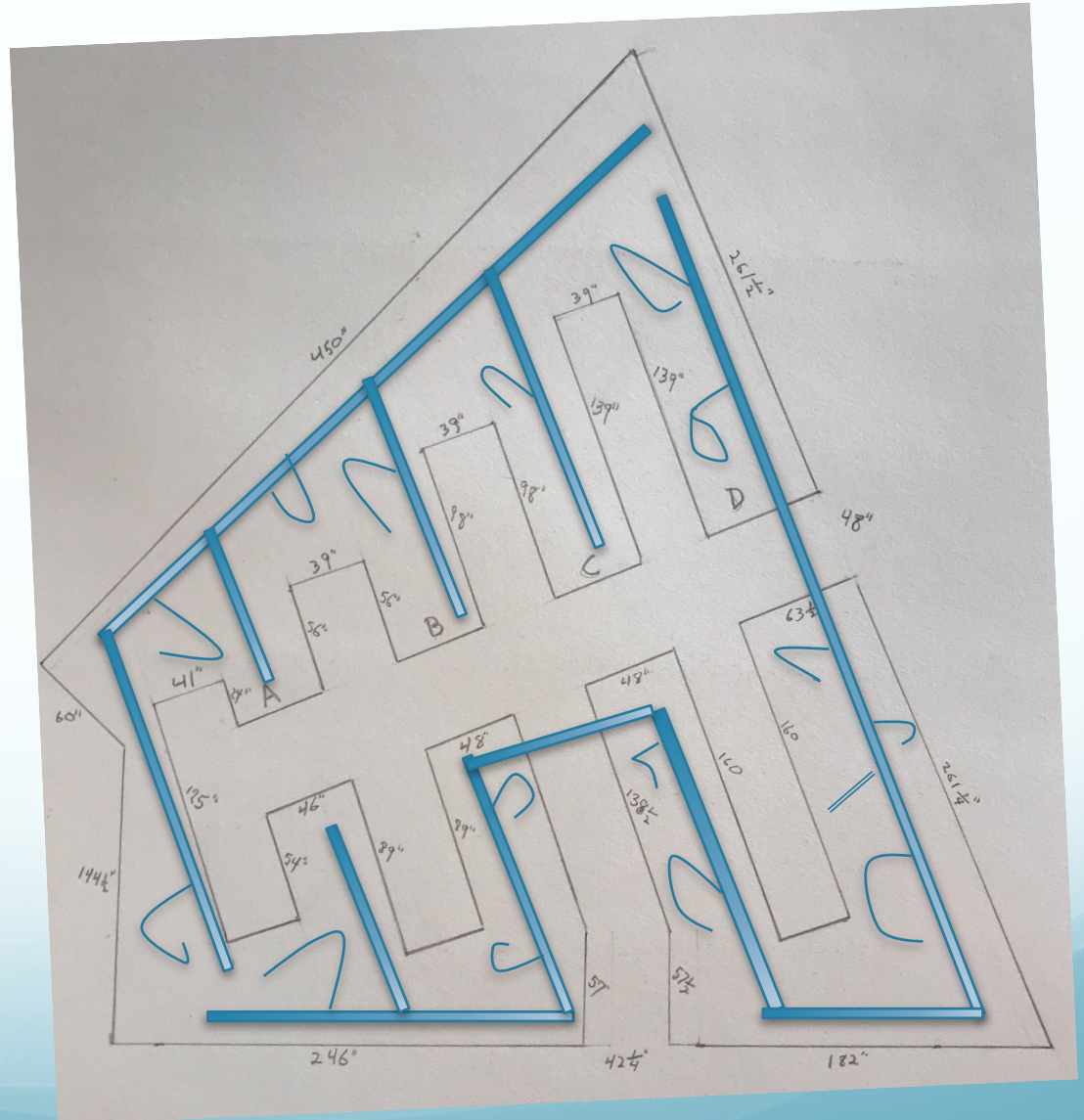






# Rose Garden

- Next week, Tuesday morning we will start to install
- The Drip Irrigation System
- Delivering water where it is needed
- More balanced pressure from start to finish



# Rose Garden



- On April 1<sup>st</sup>, weather permitting
- The Manhattan Rose Society have been invited back
- For Rose pruning
- Rose committee members and all gardeners, please join us



# New Business

- Beverly Schutes on Soccer balls
- Julie Lipp
- Karen Lee on planting of seed

# End of Spring Meeting



**Next Full Membership Fall Meeting**  
**October 22th, 2023**  
**Sunday at 6:45pm (7:00pm)**

